

Neddenaverbergen

Parcourchef
Robert Kühn(FS)

Prüfung Nr.: 11+19

Einspänner

Standardhindernisfahren

Klasse: A

Samstag, 11. Mai 2019

Beginn: 7:30 Uhr

Richtverf.: A
LPO § 721
FEI RG / Art.

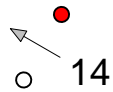
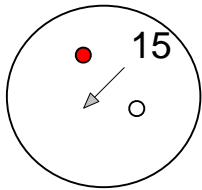
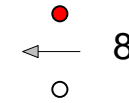
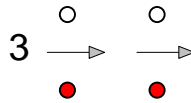
Tempo: 230 m/Min.
Hindernisse:
Zuschlag: 30 cm
Hindernisbreite: cm

Bahnlänge: 450 mtr.
Erlaubte Zeit: 118 sek.
Höchstzeit: 236 sek.
Hindernisfehler: sek.

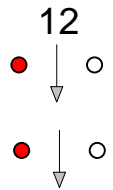
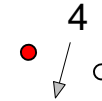
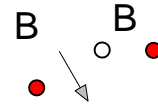
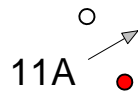
über:
Tempo: m/Min.
Zuschlag: cm
Hindernisbreite: cm

Bahnlänge: 0 mtr.
Erlaubte Zeit: 0 sek.
Höchstzeit: 0 sek.

-5

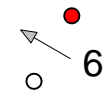


9A

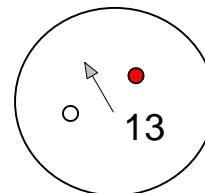
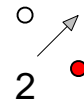


C

-



D



0

Richter

Ein/Ausfahrt

Start ↓ Ziel